



GAT MONTHLY MEMBERSHIP PROGRESS REPORT

Results as of: 6/30/2023

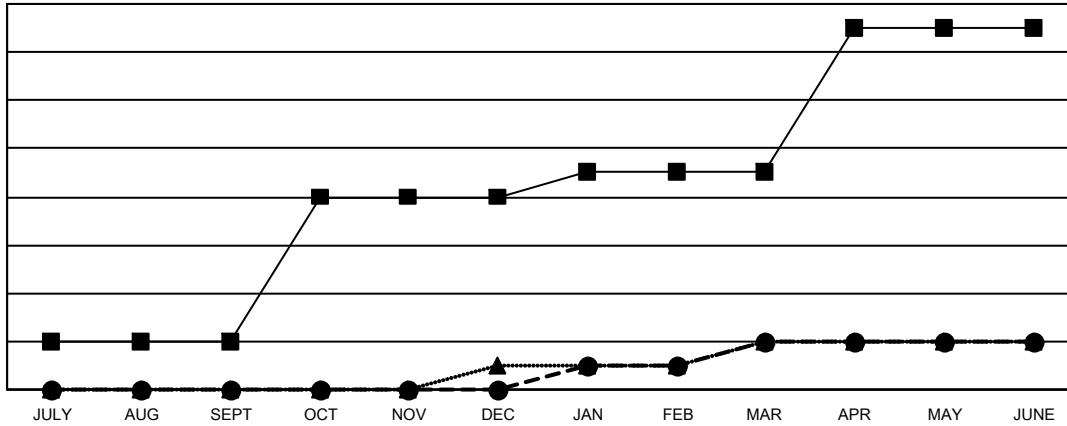
Multiple District 19

LOCATION: WASHINGTON

Clubs			
RESULTS FOR 2022-2023			
QUARTER	NEW CLUB GOAL	NEW CLUBS	DROPPED CLUBS
JULY/AUG/SEPT	2	0	4
OCT/NOV/DEC	6	0	4
JAN/FEB/MAR	1	2	3
APR/MAY/JUNE	6	0	10

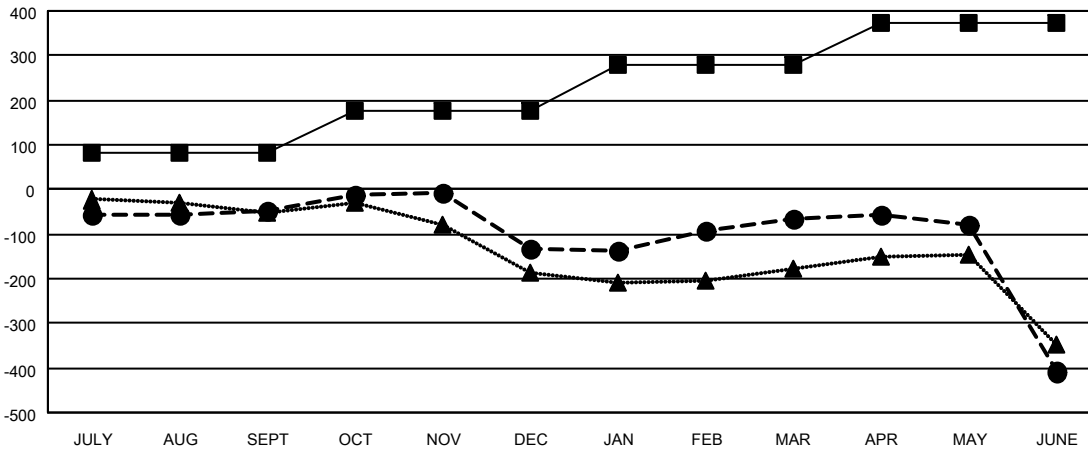
Members			
RESULTS FOR 2022-2023			
QUARTER	MEMBER GROWTH NET GOAL	MEMBER GROWTH ACTUAL	DROPPED MEMBERS ACTUAL (including transfers)
JULY/AUG/SEPT	84	274	287
OCT/NOV/DEC	91	306	357
JAN/FEB/MAR	104	359	260
APR/MAY/JUNE	95	340	623

GOALS AND ACTUAL NEW CLUBS CUMULATIVE



- CURRENT YEAR GOALS FOR NEW CLUBS
- CURRENT YEAR ACTUAL NEW CLUBS
- ▲- LAST YEAR ACTUAL NEW CLUBS

GOALS AND ACTUAL MEMBERS CUMULATIVE



- MEMBER GROWTH NET GOAL
- MEMBER GROWTH ACTUAL
- ▲- LAST YEAR MEMBERSHIP ACTUAL

DROPPED CLUBS: 21	
DROPPED MEMBERS	
DECEASED	148
CLUB CANCELLED	108
OTHER	1,271
TOTAL	1,527

268 CLUBS OF 381 ADDED 1 OR MORE NEW MEMBERS

[CLICK HERE FOR CUMULATIVE MEMBERSHIP DATA](#)

GENDER DISTRIBUTION	
MALE	5,440 (58.99%)
FEMALE	3,777 (40.96%)
NON BINARY	1 (0.01%)
PREFER NOT TO ANSWER	4 (0.04%)
TOTAL FAMILY UNIT MEMBERS	1,983
FAMILY MEMBERS PAYING HALF DUES	1,012